

UFO Doctor, Nov 9th, 2015

1. Introduction

The Light and Sound Tower has been designed by F. Kottelat , using a 3D-Printer.

Additional milling was needed for better protection of the IR-LED's and for mounting the top plate of the exponential horn.

2. Circuit Power IR-LED and Omnidirectional Speaker

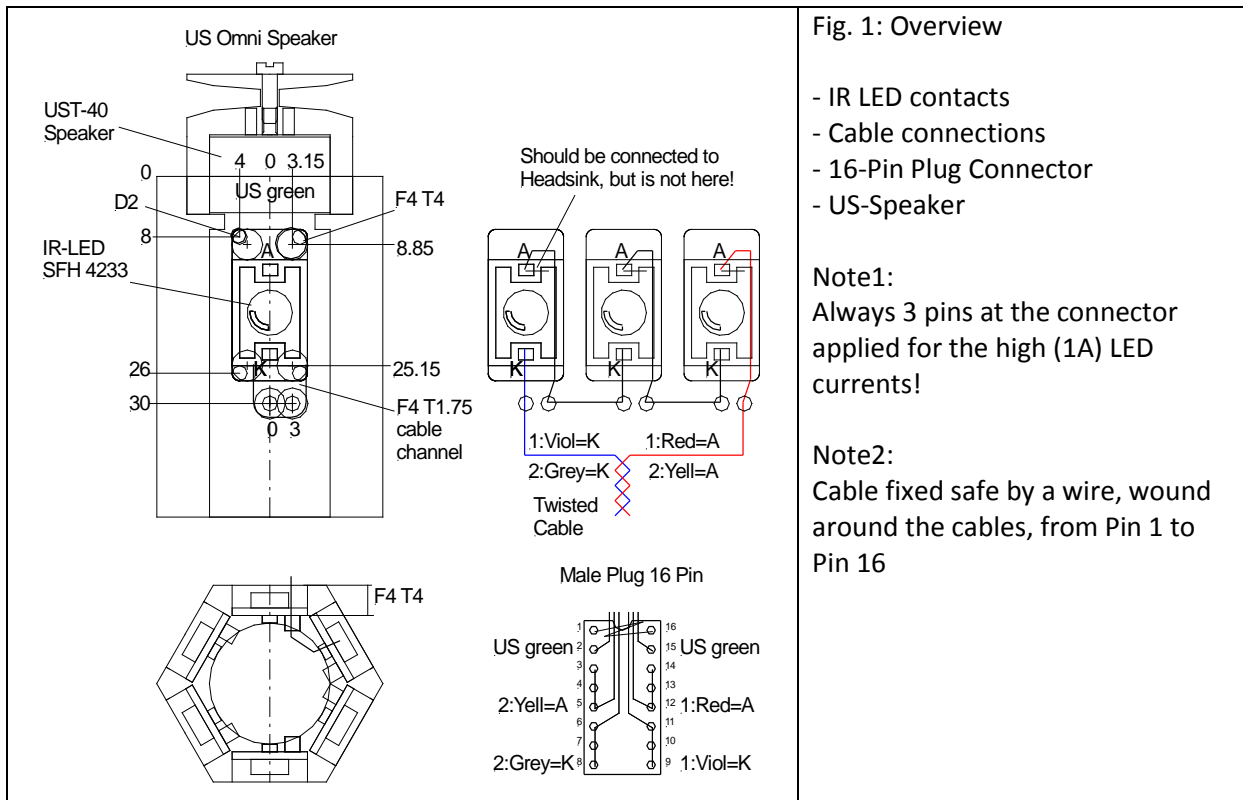


Fig. 1: Overview

- IR LED contacts
- Cable connections
- 16-Pin Plug Connector
- US-Speaker

Note1:
Always 3 pins at the connector applied for the high (1A) LED currents!

Note2:
Cable fixed safe by a wire, wound around the cables, from Pin 1 to Pin 16

3. Final Light and Sound Tower

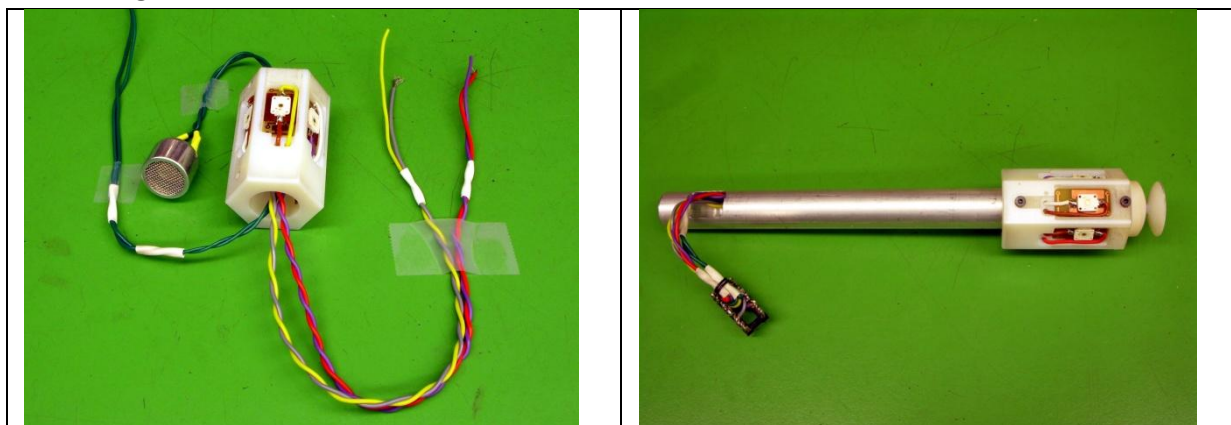


Fig. 2: Tower with twisted cables for 2 x 3 IR-LED and for 1 x US omnidirectional speaker

Fig. 3: Assembled Tower with 16-Pin Male connector